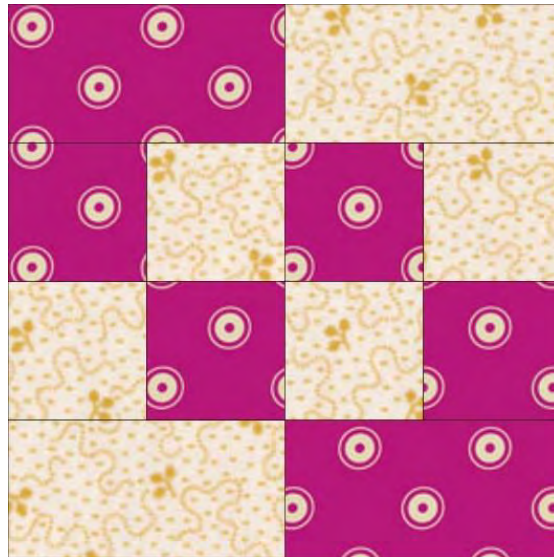


Fraser Valley Quilters' Guild Block of the Month – June 2026

Block will finish at 8" (with seam allowance – 8 ½")

Diagonal Chain



Light colour - solid or small print that reads as LIGHT) for background

Medium to Dark colour (solid or small print that reads as medium to dark).

Cut for each block:

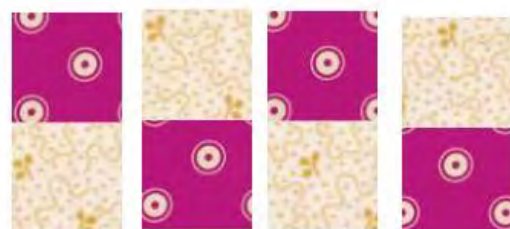
Light	Dark
2 ½" x 2 ½" square (4)	2 ½" x 2 ½" square (4)
2 ½" x 4 ½" rectangle (2)	2 ½" x 4 ½" rectangle (2)

Assemble and Stitch:

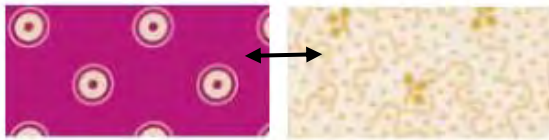
Stitch a medium/dark square to a light square



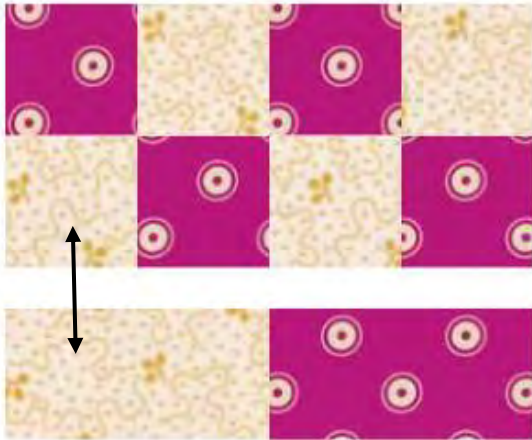
Repeat 3 times to make a total of 4 of these units



Turn every 2nd unit upside down and stitch the units together so that you end up with an 8 square unit.



Stitch a light rectangle to a medium/dark rectangle along the short side. Repeat, to finish with 2 of these units.



Stitch a rectangle unit to the top of the 8-patch unit (as shown above). Stitch the second rectangle unit to the bottom of the 8-patch unit, this time making sure the light rectangle is on the bottom left (as shown).

These blocks are great to use up jelly roll strips (2 1/2" strips that are width of fabric, (usually 42 "). I was able to cut the amount of squares/rectangles needed for 2 blocks from (2) - 2 1/2" strips (one light and one dark strip).

Some examples of how this block might look in a scrappy quilt

