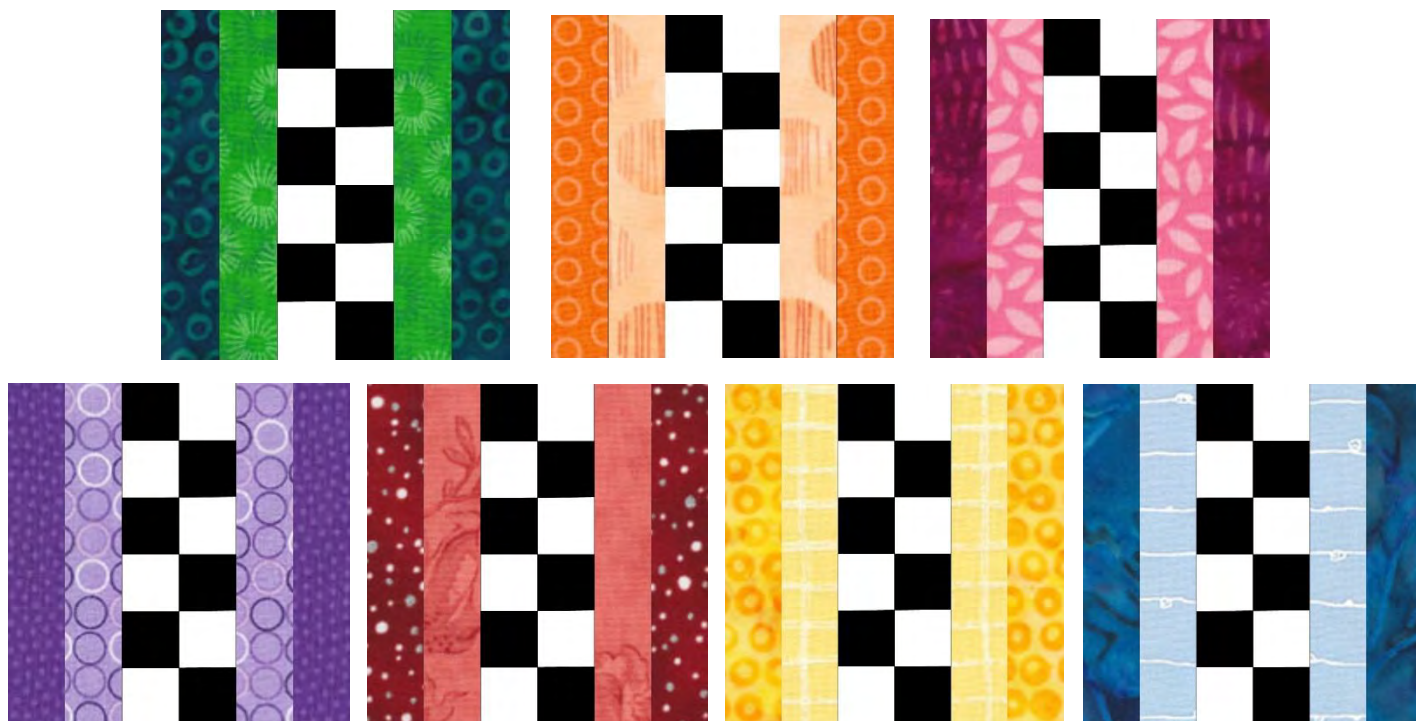


Fraser Valley Quilters' Guild Block of the Month – January 2026

At the Racetrack by Marion Cardenas for FVQG

Block will finish at 12" (with seam allowance – 12 ½")



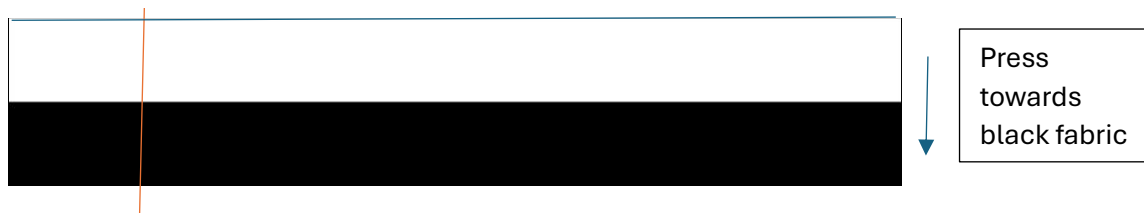
Pick a colour family. Find a dark and a lighter colour of the same colour family.

Cut:

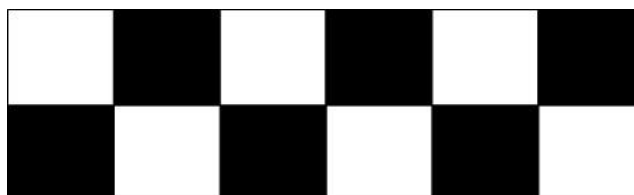
Dark Colour	Lighter Colour	Black	White
2 ½" x 12 ½" strip (2)	2 ½" x 12 ½" strip (2)	2 ½" x 15" strip (1)	2 ½" x 15" strip (1)

All seams are ¼". Check your seam allowance to make sure it is accurate.

Stitch the white rectangle to the black rectangle along the long side. Sub-cut into **6** units that are 2 ½" wide



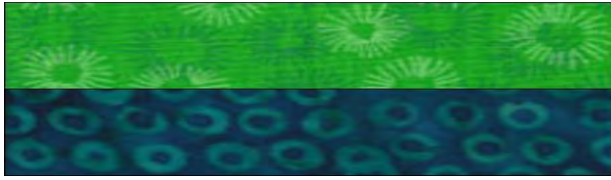
Rotate every 2nd cut unit so that black is on top, every 2nd one. Stitch these 6 units together so it looks like this:



Make sure that the white square is on top left and also bottom right of this pieced unit.

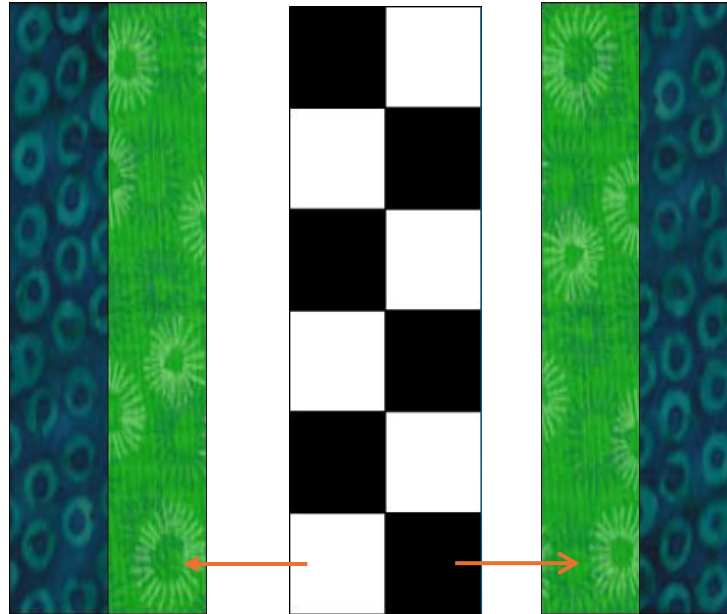
Stitch a dark coloured strip to the light coloured strip along the long side.

Press seams towards the darker fabric.



Repeat with the other dark and light strip.

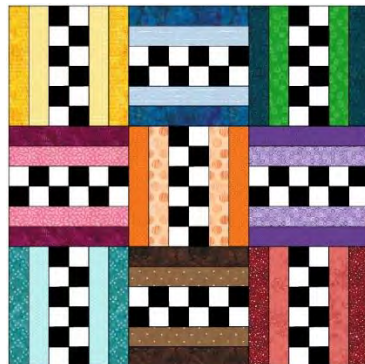
Assemble the units, making sure that the lighter coloured strips are sewn to the black/white checkered unit.



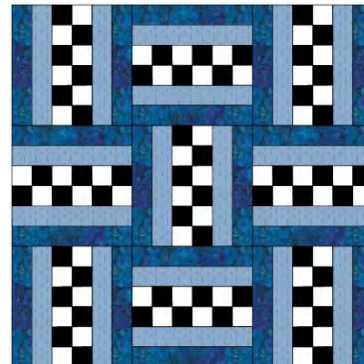
Press the seam between the black & white checkered unit and coloured strips towards the long strips unit

Some ideas for combining blocks

Different colour group blocks, every other block rotated 90 degrees



One colour family, every other block rotated 90 degrees



Every other block rotated 90 degrees, with sashing/setting squares and borders



Row 1 blocks same direction - rotate row 2.

Row 3 is same as row 1. Also has sashing/setting squares and borders.

