

MAY* 2021 BLOCK OF THE MONTH

*Should say JUNE

valerie.towler@shaw.ca

A traditional block this month, the **Bear's Paw**. This block has been around since the 1850's and is believed to be one of those used on the underground railroad to guide escaped slaves to food and water.



Select two fabrics in a colour of your choice, one slightly darker than the other, and a light background.

Cutting:

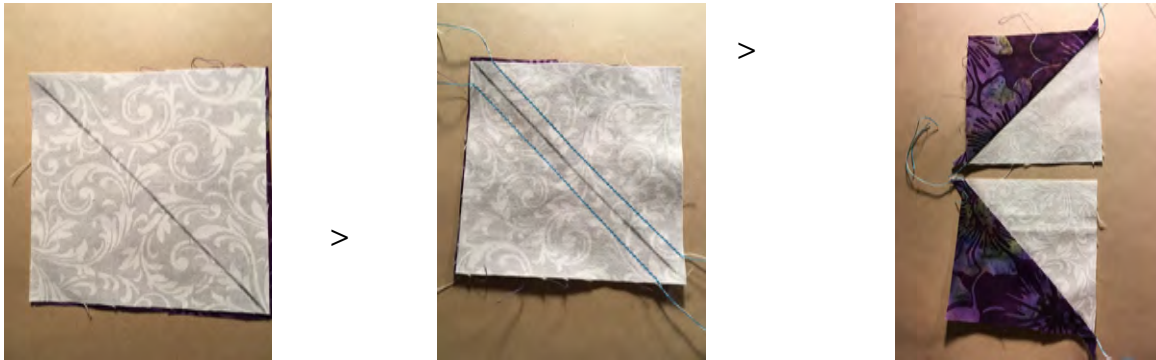
Background (BG): Four 2 1/2" squares
Eight 3 1/2" squares
Four 6 1/2 x 2 1/2" rectangles

Dark colour: Eight 3 1/2" squares
One 2 1/2" square

Contrast fabric: Four 4 1/2" squares

Assembly:

First make your half square triangles. Take the eight BG 3 1/2" squares and place one on each of the eight dark 3 1/2" squares, right sides facing. Draw a diagonal line across each BG square. Then stitch 1/4" on each side of the line. Cut along each diagonal line to make two squares. Open and press. Trim each square to 2 1/2".



Then lay all your pieces out as shown below and sew together. You will have a 14 1/2" block.



