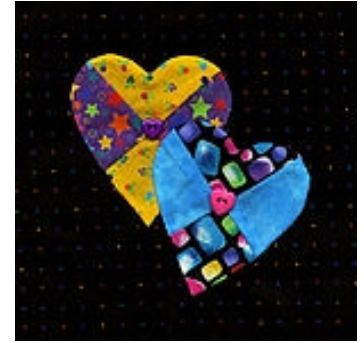


December 2006 Block of the Month  
**"Bright Nights"** 10" X 10" finished  
 (10½" x 10½" unfinished)

January 2007 Block of the Month  
**"Patchwork Hearts"** 7½" X 7½" finished  
 (8" X 8" unfinished)



### Fabric Requirements and Cutting Directions for Both Blocks

You will need a mixture of Bright fabrics and Black fabric for both blocks.

Cut **Brights** into:

9 pcs. 2½" X 2½" Squares and 12 pcs. 3" X 3" Squares (4 pieces for Dec. Block and 8 pieces for Jan. Block).

Cut **Black** into:

For December Block - 4 pcs. - 3" x 3" and 4 pcs. - 2½" X 6½"

For January Block - One background piece 8" X 8"

#### December Block - Instructions:

The "Bright Nights" quilt block is created using a partial seam sewing technique. Pieces are stitched around a center square, sew only half of the first seam. Then sew the remaining pieces. Finally, close the rest of the first seam joining the first and last pieces.

##### Step One

Using four of the 3" X 3" squares of Bright and four of the 3" squares of the Black create 4 half square triangle blocks. If you use the quick method (Diagram 1) of laying each square on top of each other (right sides facing) and sewing a seam line down each side of the center line . . . You will have created 8 half square triangle blocks (two of each colour). You will only need four for this block. Trim these block to 2½" x 2½".

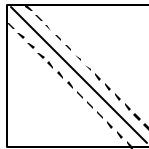


Diagram 1

##### Step Two

Create **four** blocks as shown in Diagram 2.

For each block join one half-square triangle block with two 2½" X 2 ½"

Bright fabric blocks vertically and then add to the right side one 2½" x 6½" black fabric block.

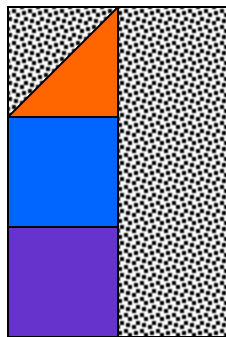


Diagram 2

##### Step Three

Join the four pieces created in step 2 around a middle 2½" x 2½" Bright fabric block as shown in Diagram 3. Remembering that your first seam will only be partial stitched and that seam will be finished when the final piece is added to the middle block.

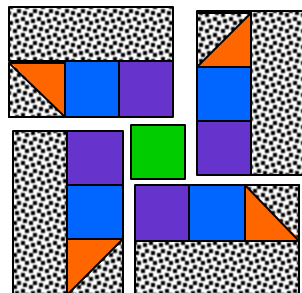


Diagram 3

#### January Block - Instructions:

##### Step One

Create two four patch blocks using the 8 - 3" X 3" squares of bright fabric.

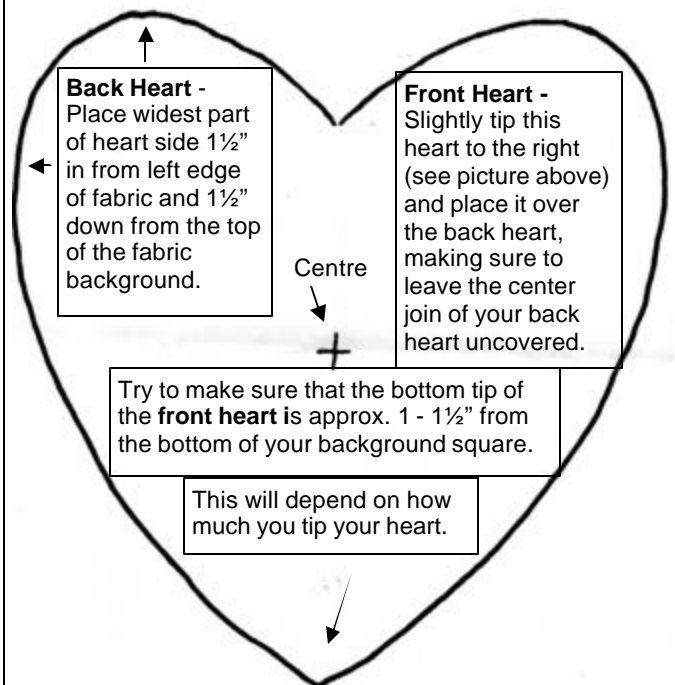
##### Step Two

Using the heart pattern below create a template. On your template be sure to mark the center (I found using a hole punch to create a hole in the exact center worked well for lining up to the center of the four patch).

##### Step Three

Cut out two heart shapes from your four patch blocks. Remember to add 1/4" around your template if you intend to use the traditional "turn-under" appliqué method.

#### Heart Placement on 8" x8" black background:



Use your own favourite method of appliqué and add buttons to the center of each heart.